

Prelude: Accompanist's choice

Cantor Greeting: Welcome to Sacred Heart Church as we celebrate the Epiphany of the Lord. Like the Star that guided the Magi, so faith leads us here to meet Jesus, the revelation of God's love made visible. May we offer the gifts of our love, worship, and service to the Lord. Please stand and greet those around you as we enter into prayer.

Gathering Song: GP3-253 Angels from the Realms of Glory

- Verses 1, 2 & 3

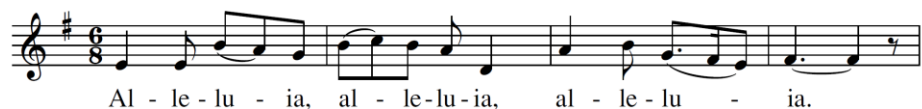
Gloria: GP3-49 Mass of Christ the Savior (Schutte)

- Refrain in between verses

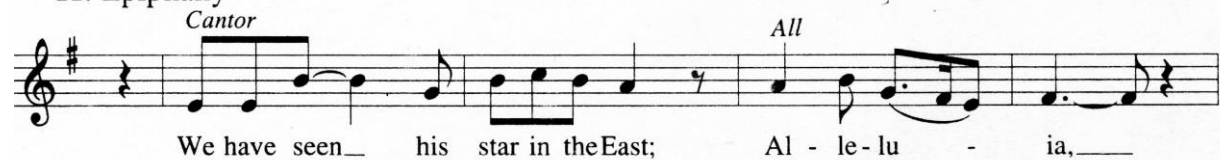
Responsorial Psalm: SS2 #262 Psalm 72: Lord, Every Nation (Blakesley) on back for cantor

- Verses 1-4

Gospel Acclamation: Mass of the Angels and Saints (Janco) *Repeated after Gospel reading*



11. Epiphany



Preparation of Altar/Gifts: GP3 -255 We Three Kings

Eucharistic Acclamations: Mass of Christ the Savior GP3-52, 53, 56, 57 (Schutte)

- (Holy, We Proclaim, Amen, Lamb)

Communion Songs:

1. GP3-259 The First Nowell
2. GP3 -256 What Child Is This

Song of Praise: GP3-242 Go, Tell It on the Mountain

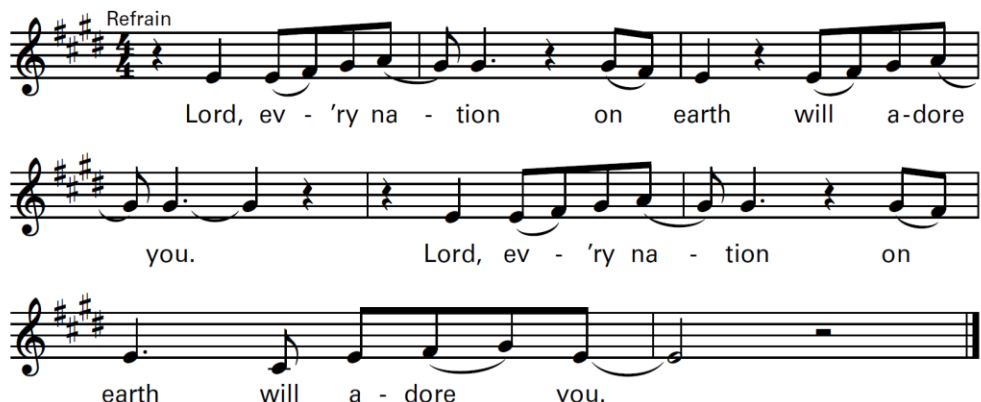
Recessional: Accompanist's choice

LORD, EVERY NATION

Psalm 72

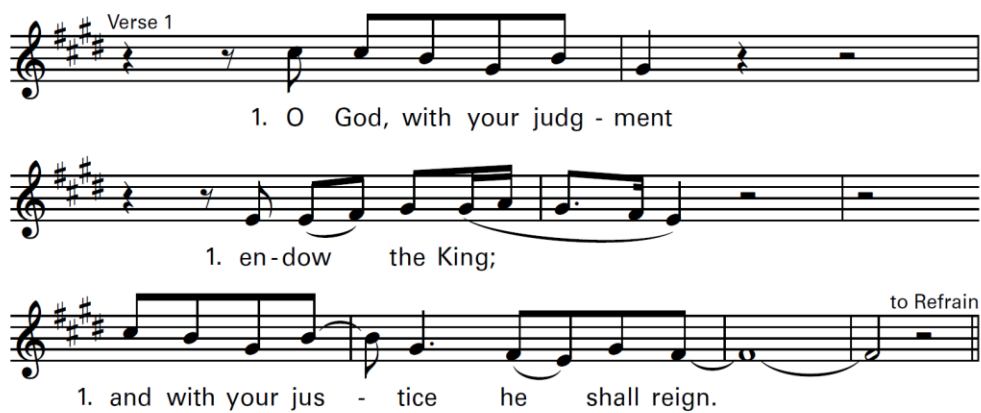
Joshua Blakesley

Refrain



Lord, ev - 'ry na - tion on earth will a-dore
you. Lord, ev - 'ry na - tion on
earth will a - dore you.

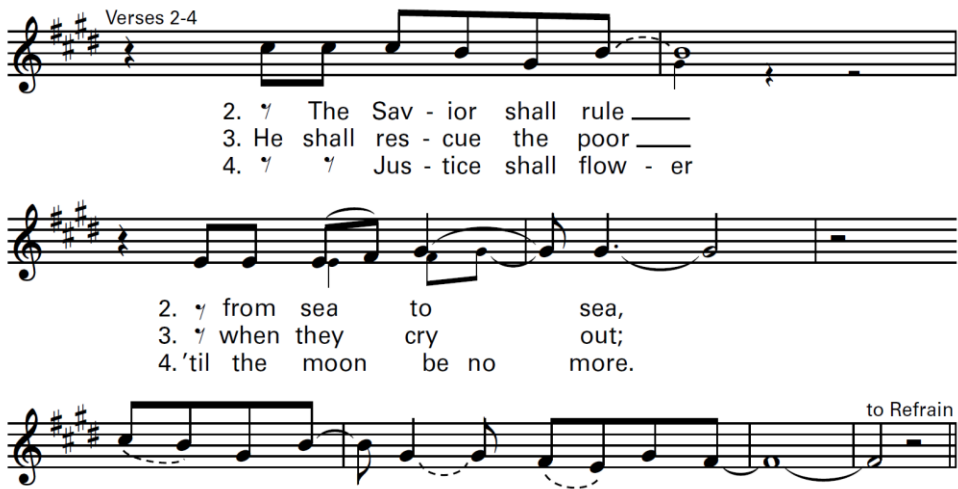
Verse 1



1. O God, with your judg - ment
1. en-dow the King;
1. and with your jus - tice he shall reign. to Refrain

Text: Based on Psalm 72:1, 8, 12, 7 and 13. Refrain text © 1969, 1981, 1997, ICEL.
All rights reserved. Used with permission. Music and verses text © 2004, Joshua Blakesley.
Published by OCP Publications. All rights reserved.

Verses 2-4



2. ♪ The Sav - ior shall rule ____
3. He shall res - cue the poor ____
4. ♪ ♪ Jus - tice shall flow - er

2. ♪ from sea to sea,
3. ♪ when they cry out;
4. 'til the moon be no more.

2. and ____ to all ____ ends ____ of ____ the earth.
3. he'll save the dy - ing when they are a - lone.
4. He will show mer - cy ____ for ____ the poor. to Refrain